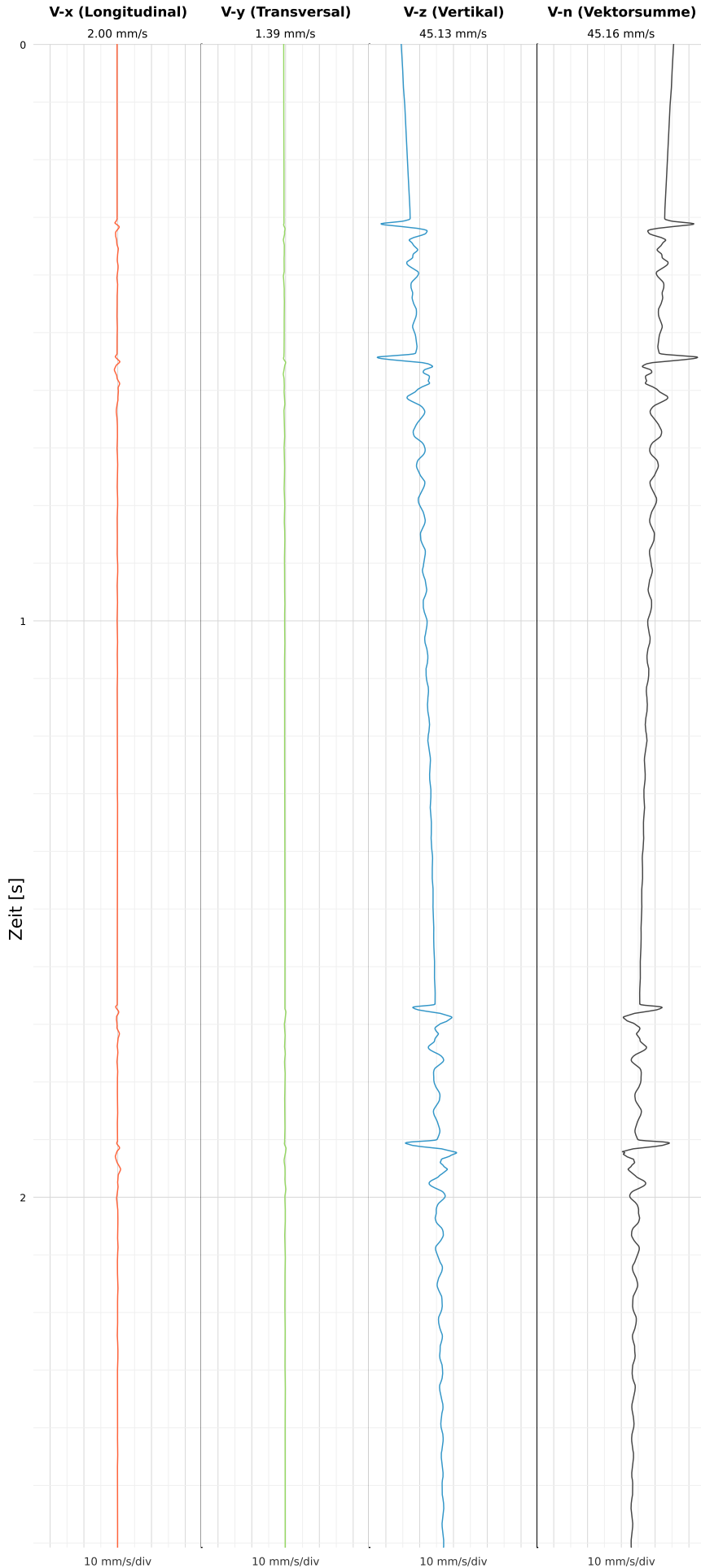


## SCHWINGGESCHWINDIGKEIT



DATEI: 2434-04062026-235550\_raw.csv

Aufzeichnungsdauer: 2.61 s | Abtastrate: 1000 Hz

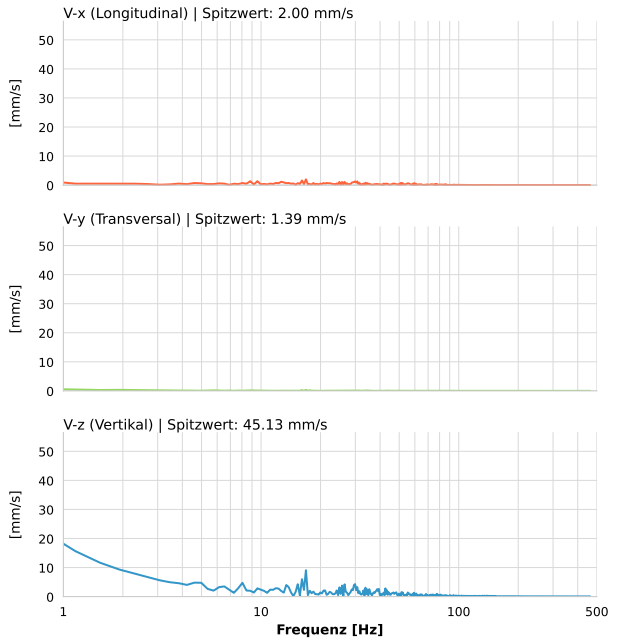
|                         |                      |
|-------------------------|----------------------|
| <b>Datum:</b>           | 04.06.2026           |
| <b>Zeit:</b>            | 23:55:50             |
| <b>Event-ID:</b>        | 2434-04062026-235550 |
| <b>Kalibrier Datum:</b> | 10.07.2025           |

### Spitzwerte

| V-x (Longitudinal) | V-y (Transversal) | V-z (Vertikal)    |
|--------------------|-------------------|-------------------|
| 2.00 mm/s          | 1.39 mm/s         | 45.13 mm/s        |
| 16.9 Hz            | 0.4 Hz            | 0.4 Hz            |
| 29.82% von Limit   | 27.71% von Limit  | 902.60% von Limit |

**V-n (Vektorsumme):** 45.16 mm/s

## SPEKTRALANALYSE - KOMPONENTEN FFT



| Kanal | Spitzwert  | Spektrum 25% | Spektrum 50% | Spektrum 75% |
|-------|------------|--------------|--------------|--------------|
| X     | 2.00 mm/s  | 15.7 Hz      | 30.7 Hz      | 59.4 Hz      |
| Y     | 1.39 mm/s  | 4.6 Hz       | 26.5 Hz      | 69.4 Hz      |
| Z     | 45.13 mm/s | 3.1 Hz       | 22.2 Hz      | 59.0 Hz      |

## SPEKTRALANALYSE - FFT (DIN 4150-3)

