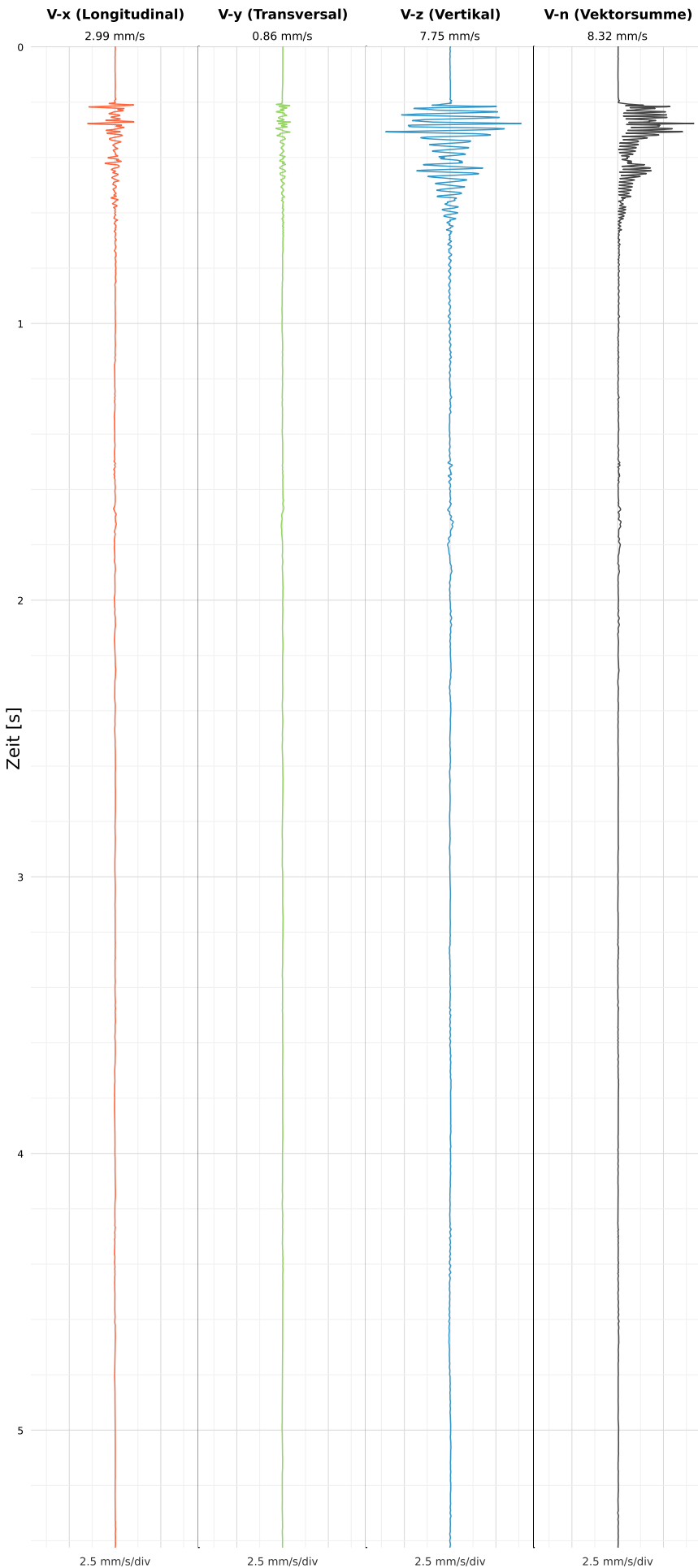


SCHWINGGESCHWINDIGKEIT



DATEI: 2492-PG14-26052026-143057_raw.csv

Aufzeichnungsdauer: 5.42 s | Abtastrate: 1000 Hz

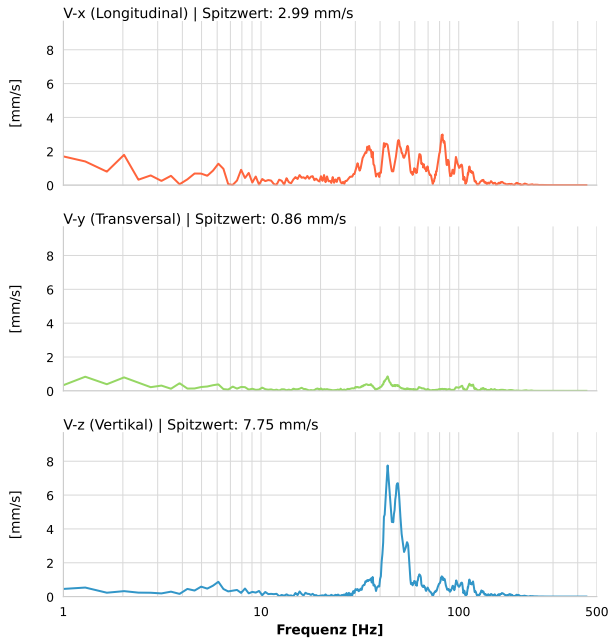
| | |
|------------------|---------------------------|
| Datum: | 10.06.2026 |
| Zeit: | 23:25:39 |
| Event-ID: | 2492-PG14-26052026-143057 |
| Kalibrier Datum: | 12.07.2025 |

Spitzwerte

| V-x (Longitudinal) | V-y (Transversal) | V-z (Vertikal) |
|--------------------|-------------------|------------------|
| 2.99 mm/s | 0.86 mm/s | 7.75 mm/s |
| 82.6 Hz | 43.7 Hz | 43.7 Hz |
| 16.39% von Limit | 6.39% von Limit | 57.73% von Limit |

V-n (Vektorsumme): 8.32 mm/s

SPEKTRALANALYSE - KOMPONENTEN FFT



| Kanal | Spitzwert | Spektrum 25% | Spektrum 50% | Spektrum 75% |
|-------|-----------|--------------|--------------|--------------|
| X | 2.99 mm/s | 43.7 Hz | 65.8 Hz | 93.1 Hz |
| Y | 0.86 mm/s | 36.7 Hz | 64.3 Hz | 115.2 Hz |
| Z | 7.75 mm/s | 44.4 Hz | 50.7 Hz | 82.0 Hz |

SPEKTRALANALYSE - FFT (DIN 4150-3)

